

ECONOMIC RESEARCH CENTER

AT THE BUCKEYE INSTITUTE

THERE ARE TRADEOFFS WITH ANY CHANGE TO PUBLIC POLICY AND EVEN SMALL POLICY CHANGES IMPACT STATE BUDGETS, BUSINESSES, AND TAXPAYERS' POCKETBOOKS

WHAT BUCKEYE DOES

To help citizens and policymakers understand how policy decisions impact businesses, families, jobs, the economy, and state revenues, The Buckeye Institute provides reliable independent research and custom dynamic economic modeling on:



Tax Policy



Government Spending



Energy Policy



Health Care Policy

IMPACT OF OUR WORK



Using its dynamic scoring model STELA (state tax and economic long-run analysis model), developed by economists at The Buckeye Institute, experts can demonstrate the **true costs of proposed policy changes**.



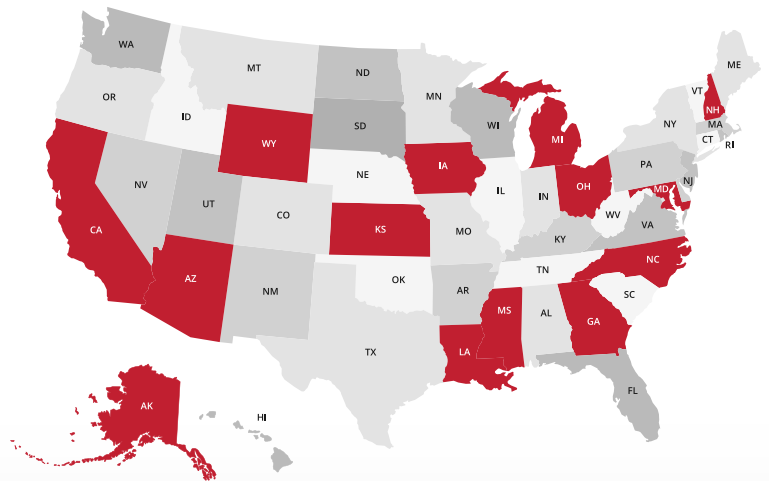
Since 2016, Buckeye has **worked in 14 states saving taxpayers more than \$10 billion**. We can help your state too.



Economists and analysts **conduct research on a variety of issues** including tax reform, fiscal policy, energy, and healthcare.



Buckeye experts develop tax plans tailored for the specific needs of states and meet with policymakers to clearly explain how those plans **benefit taxpayers and boost economic growth**.



THE BUCKEYE INSTITUTE

To Learn More, Visit: BuckeyeInstitute.org/ERC

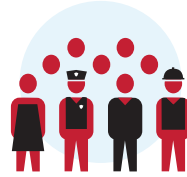
STELA

STATE TAX & ECONOMIC LONG-RUN ANALYSIS

Developed by economists at The Buckeye Institute, STELA is a dynamic tax model that analyzes how government changes to tax policy impacts:



Economic Growth



Jobs



Consumer Spending



Business Investment

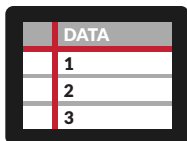


Government Revenue

STELA OUTPERFORMS OTHER TAX MODELS

Task	STELA	Other Tax Models
Models state-level policies	✓	✗
Demonstrates the immediate and future impact of proposed policies	✓	✗
Predicts how these changes will affect people, families, businesses & the economy	✓	✗

HOW STELA WORKS



Buckeye **collects the most recent official data** for the state being modeled.



Buckeye experts **input the data and policy change** into STELA.



Buckeye experts **translate that data into a numerical format** STELA can understand.



STELA **models the proposed policy change** and reveals its economic impact.

Featured in *National Review*, STELA underwent a double blind peer review consistent with academic standards and methodologies. STELA's full technical description is available upon request and allows researchers to validate STELA's accuracy and the conclusions that The Buckeye Institute draws in its research.



THE BUCKEYE INSTITUTE

To Learn More, Visit: BuckeyeInstitute.org/ERC