

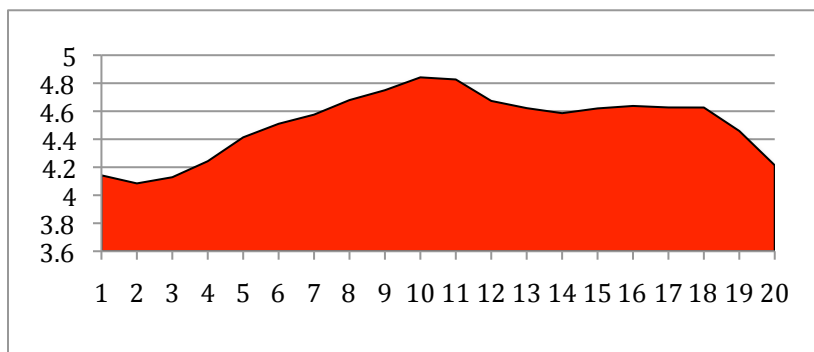
## Ohio By Numbers (November)

### Private Sector Jobs (1990-Today)

March 2000 (Peak) = 4.852 million jobs

Best Case Recovery: October 2017

Likely Recovery: Early 2020s



### Private Sector Job Growth % Change

1990-2000: 17% (Rank: 37)

2000-November 2010: -14.2% (Rank: 50 – only MI worse at -24.1%)

1990-November 2010: 2.8% (Rank: 48 – only CT, RI, and MI worse at -4.1%, -2.4%, 2.1%, respectively)

### Private Sector Job Losses 2000-November 2010

OH: -601,400 (Rank: 2 – only MI worse at -773,500)

### Net Private Sector Jobs vs. Net Government Jobs

1990-November 2010: 113,500 vs. 62,900 (Private Sector Jobs to Government Jobs Ratio of 1.8 – Rank: 5 – only MI, RI, CT, and VT worse at -175%, -8.55%, -1.8%, and 1.79%, respectively)

### *Breaking from the Forced Unionization Pack: Worker Freedom Absent From Missouri to Maine*

### Forced Unionization vs. Worker Freedom (Average)

Net Job Gain 1990-2000: 324,555 vs. 446,086

Net Job Loss/Gain 2000-November 2010: -111,434 vs. +36,686

Net Job Gain 1990-November 2010: 214,175 vs. 482,773

### Private Sector Job Growth % Change (Average)

1990-2000: 19% Forced Unionization vs. 33% Worker Freedom

2000-2010: -2% Forced Unionization vs. 2% Worker Freedom

1990-2010: 17% Forced Unionization vs. 37% Worker Freedom

Top 5: NV: 77.6%; UT: 73.6%; AZ: 66.7%; ID: 63.9%, ND: 50.9%

Bottom 15: All forced unionization states **circled** on map, plus California and Hawaii

2000-2010 Net Job Losses: 20/28 (71%) Forced Unionization vs. 9/22 (41%) Worker Freedom

Federal Unemployment Fund Debt: \$32.24 billion Forced Unionization vs. \$9.32 billion Worker Freedom



	Jan-90	Jan-00	Stimulus Signed	Nov-10	1990-2000	2000-Nov-10	1990-2010	Stimulus to Nov-10
<b>Total Non Farm</b>	4,838,600	5,617,200	5,180,400	5,015,000	778,600	-602,200	176,400	-165,400
<b>Mining &amp; Logging</b>	18,000	13,100	12,000	11,600	-4,900	-1,500	-6,400	-400
<b>Construction</b>	194,300	247,600	195,500	168,600	53,300	-79,000	-25,700	-26,900
<b>Manufacturing</b>	1,044,100	1,031,600	666,500	625,800	-12,500	-405,800	-418,300	-40,700
<b>Trade, Transportation &amp; Utility</b>	961,900	1,117,400	992,600	947,500	155,500	-169,900	-14,400	-45,100
<b>Information</b>	99,600	106,900	83,500	74,000	7,300	-32,900	-25,600	-9,500
<b>Financial Activities</b>	253,300	307,400	283,500	261,400	54,100	-46,000	8,100	-22,100
<b>Professional &amp; Business Services</b>	444,200	636,400	635,000	620,000	192,200	-16,400	175,800	-15,000
<b>Education &amp; Health Services</b>	533,800	672,300	823,700	839,400	138,500	167,100	305,600	15,700
<b>Leisure &amp; Hospitality</b>	401,100	483,800	480,000	481,200	82,700	-2,600	80,100	1,200
<b>Other Services</b>	173,500	222,200	215,400	207,800	48,700	-14,400	34,300	-7,600
<b>Government</b>	714,800	778,500	792,700	777,700	63,700	-800	62,900	-15,000
<b>Non-Farm, Non-Government</b>	4,123,800	4,838,700	4,387,700	4,237,300	714,900	-601,400	113,500	-150,400

Red=fewer jobs than both 2000 and 1990; Yellow: fewer jobs than 2000, but more than 1990; Green: more jobs than both 2000 and 1990